

REDCLIFFE PLANTATION
181 REDCLIFFE RD
BEECH ISLAND, SC 29842
(803) 827-1473

UPCOMING
EVENTS AT RED-
CLIFFE

Music in the

Magnolias

Sat, May 7th

4:30-6:30

For more information on
these programs please con-
tact the park.

Park Staff

Park Manager
Joy Raintree

Park Interpreter
Elizabeth Laney

Park Technician
Doug Kratz

Asst. Park Ranger
Theresa Hipps

True or False?

The widow's walk
atop Redcliffe was
built so that the
family could see
General Sherman's
troops crossing the
Savannah River?

FALSE

The enclosed cupola
was renovated into
a widow's walk in
1901 when it was
described as a fire
hazard.

Redcliffe Southern Times

VOLUME 10, ISSUE 10

APRIL 2016

April Fools Edition!

We're serious about history and that's no joke, but we thought we'd throw a few puzzles at you this month and see how well you know Redcliffe.

They said what???

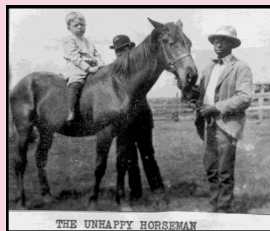


Did James Henry Hammond say...
"Women are made to breed, men to do the
work of the world." or "Bigomy is having one
wife too many. Monogamy is the same."



Who said..."On the outskirts of every agony
sits some observant fellow who points."

Virginia Woolf or Catherine F. Hammond?

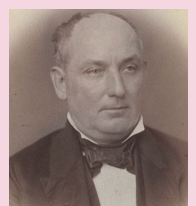


Did John Shaw Billings call himself "The
Unhappy Horseman" because his horse didn't
win the Aiken Steeplechase or simply be-
cause he didn't like horses?



Who said..."Come, I will not be modest, I be-
lieve I could make a better President than any
we have had lately. "

James Henry Hammond or James Madison?



Answers: 1) James Henry Hammond said "Women are made to breed" 2) JSB did not like horses 3)
Virginia Woolf 4) James Henry Hammond in a letter to his friend William Gilmore Simms, 1857

Music in the Magnolias

Enjoy a special afternoon of music under the shade of Redcliffe Plantation's Magnolia Allee. Light refreshments provided but bring your own lawn chair and fan! Following the musical program guests are invited to tour the historic plantation structures or enjoy the park grounds will which remain open until dusk.

Saturday, May 7th, 2016

4:30 p.m. - 6:30 p.m.

\$10 Adults, \$8 SC Seniors, \$3 Kids



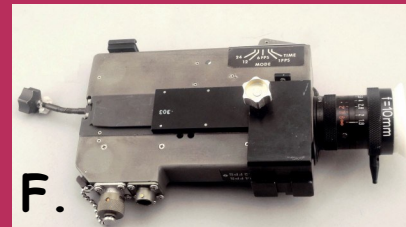
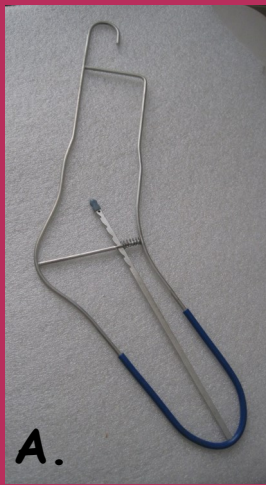
Featuring:

MAiken Music

BELLES CANTO

Aiken Youth Orchestra
East Aiken School of
the Arts Piano Students

Which artifacts belong to Redcliffe and which ones do not?



A. Yes! This is our sock stretcher! Patented in 1948 for drying socks, this is one of a set of 12. B. Yes! The French military helmet made of steel was worn by John Shaw Billings during World War I. C. Yes! One of a pair of salt cellars, silver plate with cobalt blue glass liner, circa 1934. D. No! This commemorative pin celebrates the Hotel Tuller, one of the largest luxury hotels in Detroit, built in 1906. E. Yes! A whimsical little plastic paper clip that shows two mice see-sawing, probably belonged to Billings in the 1930s. F. No! Even though John Billings enjoyed experimenting with cameras, this camera is part of a collection of items that Neil Armstrong saved from Apollo 11's mission to the moon in 1969. G. Yes! This Sardines can was found during an inspection of the box gutters in the attic. H. No! Unfortunately we don't have this Roman Dodecahedron that was found in Germany and dates between 100 and 200 A.D.